

Serie NR & NR-L



Specification	NR-95-L	NR-130-L
Width of jaw	95 mm	130 mm
Opening width	100 mm	140 mm
Height of jaw	38 mm	38 mm
Total height	105 mm	107 mm
Length of frame	260 mm	310 mm
Centre T-slots	127 mm	162 mm
Length of stroke	5 mm	5 mm
Clamping force at 7 bar	3300 N	3300 N
Weight	11 kg.	16 kg.

Specification	NR-95	NR-130	NR-150
Width of jaw	95 mm	130 mm	150 mm
Opening width	125 mm	168 mm	168 mm
Height of jaw	38 mm	38 mm	38 mm
Total height	94 mm	96 mm	96 mm
Length of frame	260 mm	310 mm	310 mm
Centre T-slots	127 mm	162 mm	182 mm
Weight	8,9 kg.	13,8 kg.	16,3 kg.

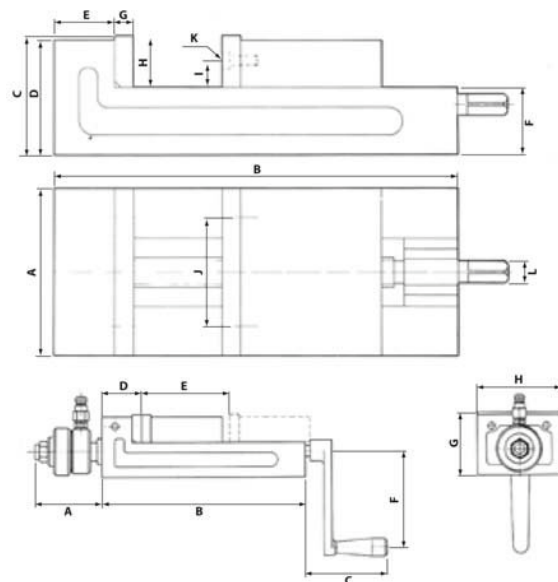
Serie NR

Top-quality cast body. Steel screw spindle and jaws. The jaws have a square-cut slot in the top section, and one of the jaws has vertical and horizontal V-slots.

Serie NR-L

Drilling vices NR 95-L and NR 130-L enable you to switch parts quickly. The pneumatic cylinder is controlled using a foot or hand-operated valve. In all other respects, they are identical to the manual versions

Serie MS & MS-H



Serie MS

The vice's parallelism is ± 0.01 mm and the design of the body ensures easy alignment in relation to the machine table, with the option of securing the vice to the edge. The low height ensures stability. Case-hardened and ground jaws. The vice is manufactured with close tolerances, which makes setting it up easy. Machines vices can be customised on request, for example, for special attachments.

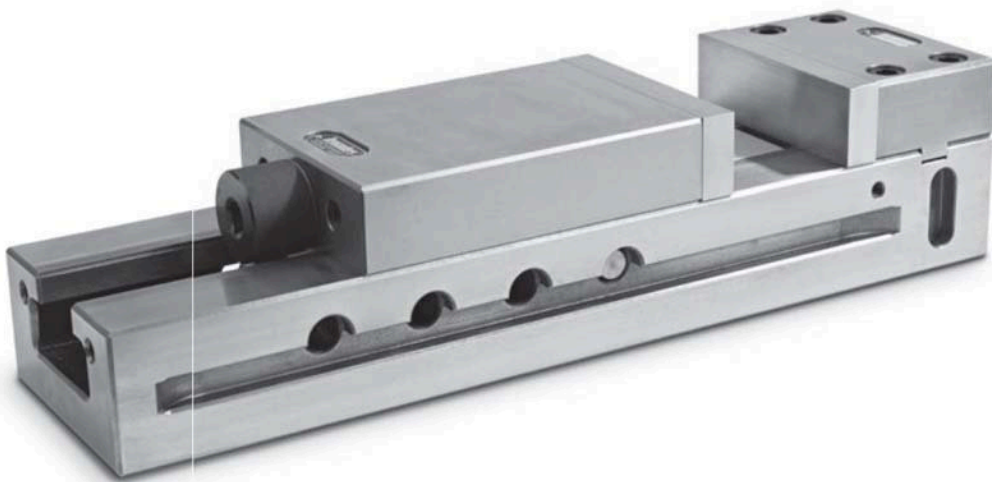
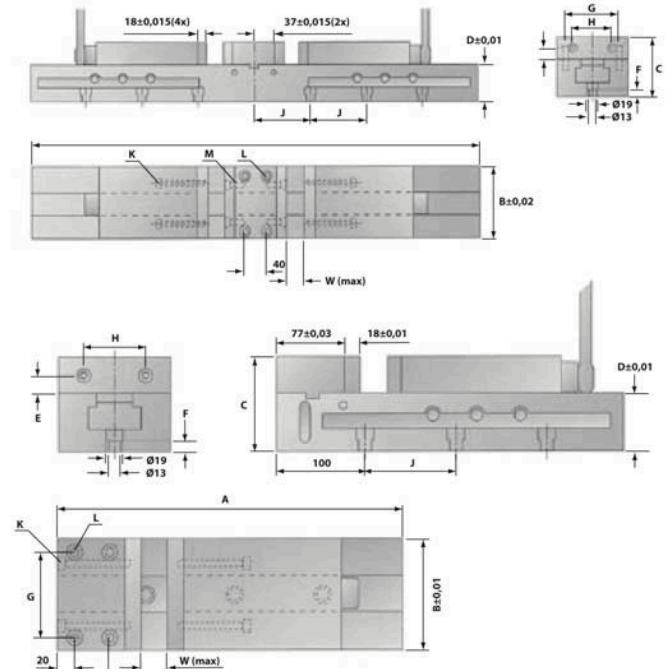
Serie MS-H

Machine vices supplied with PowRlock pneumatic-hydraulic pressure boosters that produce oil pressure of 250 bar at an air pressure of 6 bar. The automatic clamping function, which is controlled by a hand or foot-operated valve, has a stroke of approximately 6 mm and can be used over the entire width of the vice jaw, while the crank is used for coarse adjustments. Clamping using a crank can be done without any adjustment being required: high efficiency, easy adjustment, rapid installation, flexibility and excellent safety.

Specification	MS-125	MS-160	MS-200
Jaw width	125 mm	160 mm	200 mm
Opening	130 mm	160 mm	260 mm
Jaw height	38,5 mm	48 mm	55 mm
Length	300 mm	375 mm	480 mm
Total height	88,5 mm	108 mm	125 mm
Weight net	14 kg	31 kg	54 kg
Weight gross	17 kg	35 kg	60 kg

Specification	MS 125 H	MS 160 H	MS 200 H
Jaw width	125 mm	160 mm	200 mm
Span width	130 mm	160 mm	260 mm
Jaw height	38,5 mm	48 mm	55 mm
Length	400 mm	475 mm	680 mm
Total height	88,5 mm	88,5 mm	125 mm
Weight	23 kg	38 kg	61 kg
Span force kp	3000 kp	3000 kp	5000 kp

Serie RS



RS: Precision vices

Precision vices for CNC milling machines, efficient multi-task machines, and other machinery for precision machining to meet quality requirements and maintain a high production rate.

Construction in high quality materials that absorb vibrations, making it better for the machines. The vice's adjustable jaw can be detached to allow the assembly and clamping of long parts. The jaw also has a long drive handle for a better grip at work and on quality. The spindle is sealed to protect against shavings and dirt. The compact design and modular construction of the RS vice make for flexible clamping and economic machining of small parts or large work pieces with multiple clamping points. A number of accessories are available, including a variety of jaws, power clamping devices, and hydraulic jaw actuators. The specially-developed and patented design of the RS vice, together with few moving parts, ensures a long service life.

Serie BSM



BSM: Drill Sharpener

BSM drill sharpener is a simple and economic solution to the problem of blunt drills. BSM enables even untrained personnel to sharpen drills to a professional standard. The machine's weight gives it stability for a greater degree of precision. An accessory kit for sharpening drills with a diameter of 2-20 mm is available for BSM 35. With BSM 35, it is also possible to sharpen drills with diameters from 2 mm to 35 mm, including left-hand drills.

Specification

	BSM 35
Drill diameters	20-35 mm
Point angle setting	80°-160°
Clearance angle setting	0-18°
Power voltage	250 V/250W
Special Voltage	110V500W
Dimensions	250x400 mm
Net Weight	28 kg.