

## << **BAZUS Electric**>>

**Electrical equipment, software development and electric panel board**

*The BAZUS Company increases the range of offered services by the recently created "BAZUS Electric" service: outsourcing for industrial automation*

The wide range of industrial applications developed in last years by BAZUS own Electronic Dept. and the high tech Know-how capacity allows BAZUS to offer a great service in any field of industrial automation. BAZUS, your Technological-tailor made company.

"BAZUS Electric" is based in the long experience and knowledge of technological resources available, offering innovation, high quality solutions and excellent service at a very competitive price.

"BAZUS Electric": For Machine-Tools manufacturers and for Machine-Tools users. From single equipment till large deliveries under year planning.

- Electrical wiring
- Electrical control panel: Design, development of schemes and construction of electrical panels for command and control
- Automation control panel: Design and construction of automatic control panels, for special purpose machines, standard machines... Complete equipment available
- Software development and PC applications for automation
- Manufacture in accordance with European standards (Norm EN-60204-1, Norm EN-60439-1, EC EMC Directive, EC LV Directive....)
- Integrator. Use of components with experience and skill as Partners of WEG, GE, Siemens, Panasonic....
- The delivery includes:
  - o List of materials
  - o Lay-out of electrical systems
  - o List of terminals
  - o User guide (Manual of use and handling)

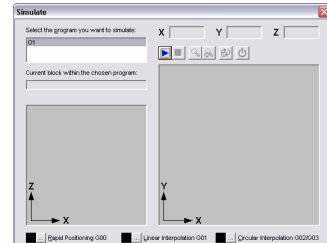
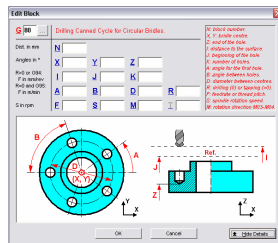
<<BAZUS Electric>> Products



Electrical wiring



Automation control panel. Large deliveries and single equipments



Software development and special applications



Control panel for Machine-Tool manufacturers