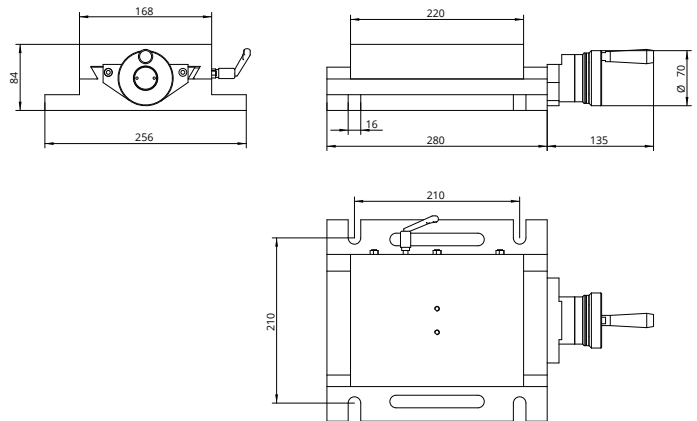


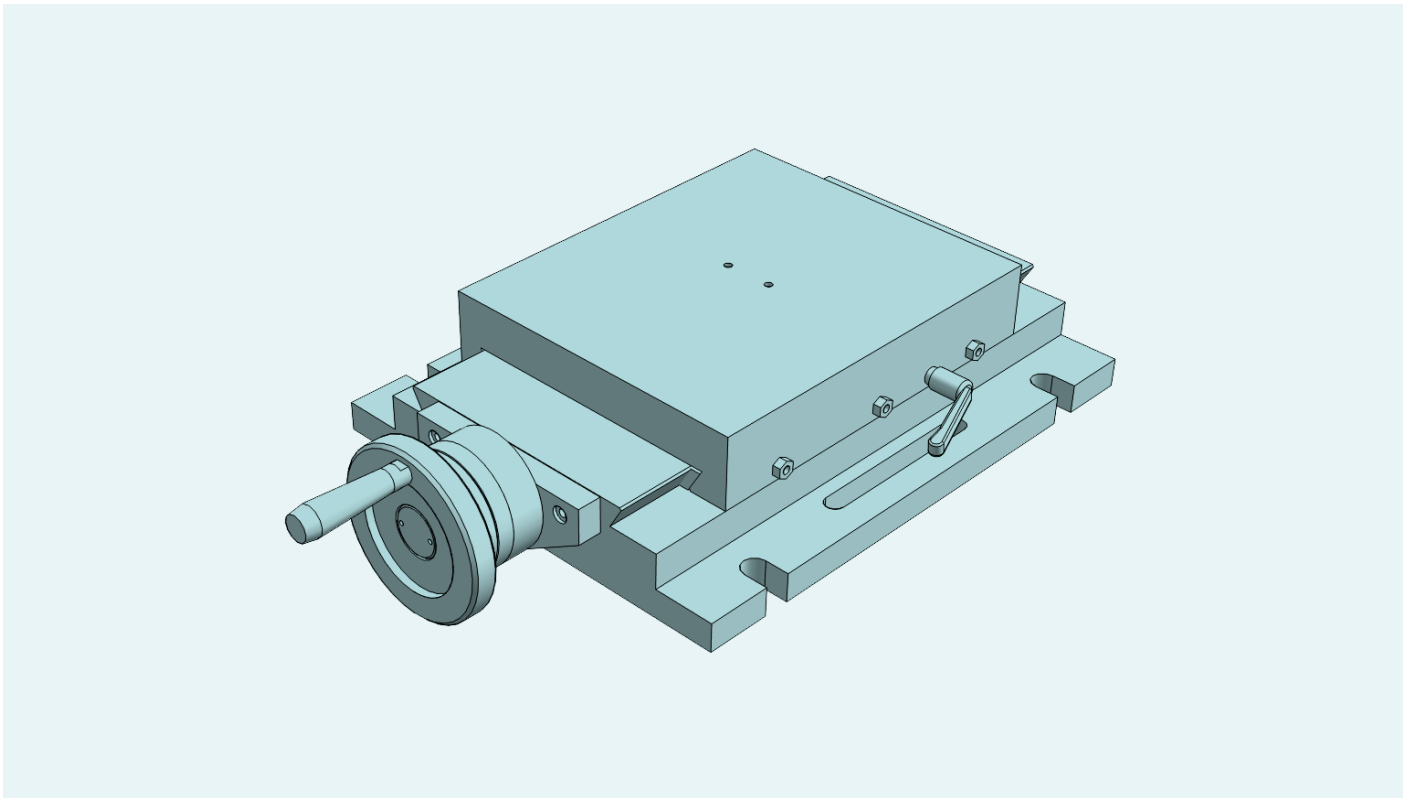
SINGLE axis table for applications with linear units. Can be used in horizontal or vertical position All elements in stabilized cast iron GG25. All surfaces with grinded finishment. Millimetered rules in XY. Vernier/nonuis matt chrome. Dial, with zero setting. Spindle with trapezoidal thread. Adjustable spindle nut. Standard lock in XY (M6 screw to block the dovetailed guides in working position)

**Slide table travelling 130**



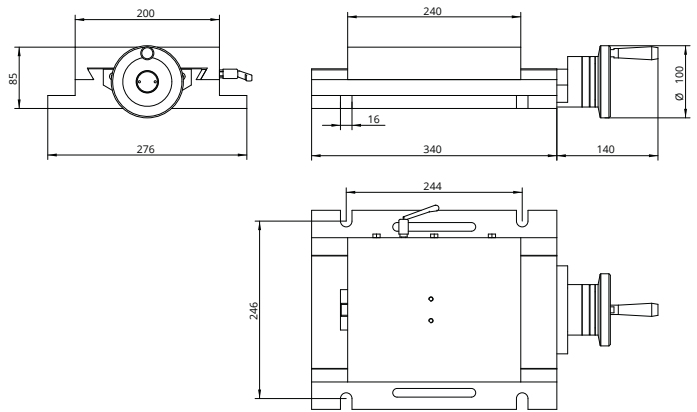
**Technical Specifications**

<b>X - Travel [mm]</b>	130
<b>Y - Travel [mm]</b>	-
<b>Resolution [mm]</b>	0,05
<b>Max. weight [kg]</b>	105
<b>Max. work pres. [kg]</b>	800
<b>Weight [kg]</b>	17

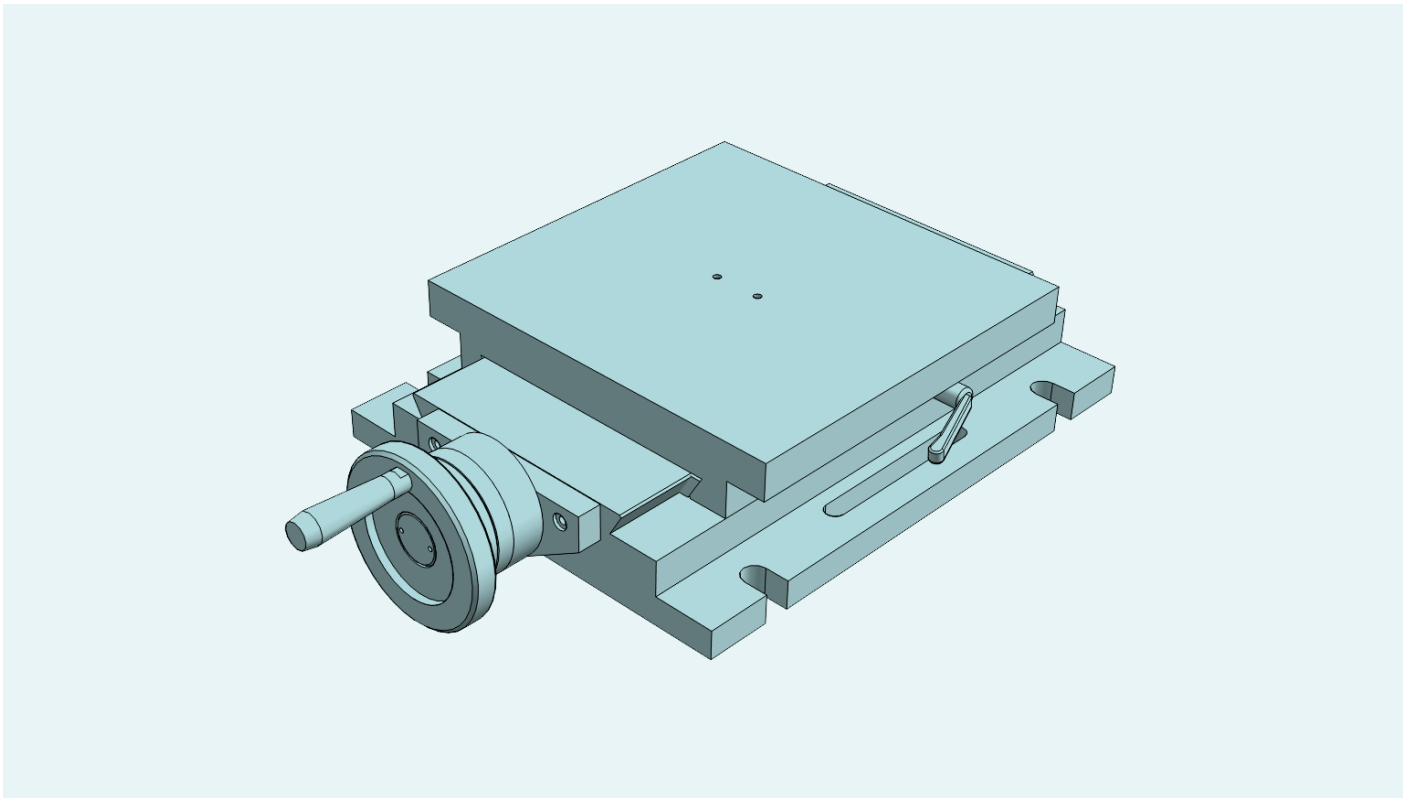


SINGLE axis table for applications with linear units. Can be used in horizontal or vertical position All elements in stabilized cast iron GG25. All surfaces with grinded finishment. Millimetered rules in XY. Vernier/nonuis matt chrome. Dial, with zero setting. Spindle with trapezoidal thread. Adjustable spindle nut. Standard lock in XY (M6 screw to block the dovetailed guides in working position)

**Slide table travelling 160**

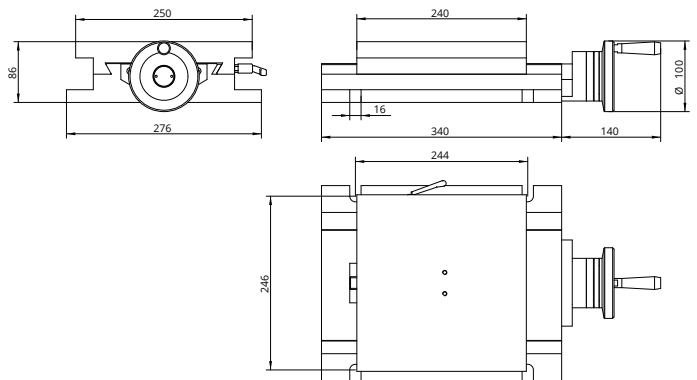


Technical Specifications	
X - Travel [mm]	160
Y - Travel [mm]	-
Resolution [mm]	0,05
Max. weight [kg]	270
Max. work pres. [kg]	920
Weight [kg]	21

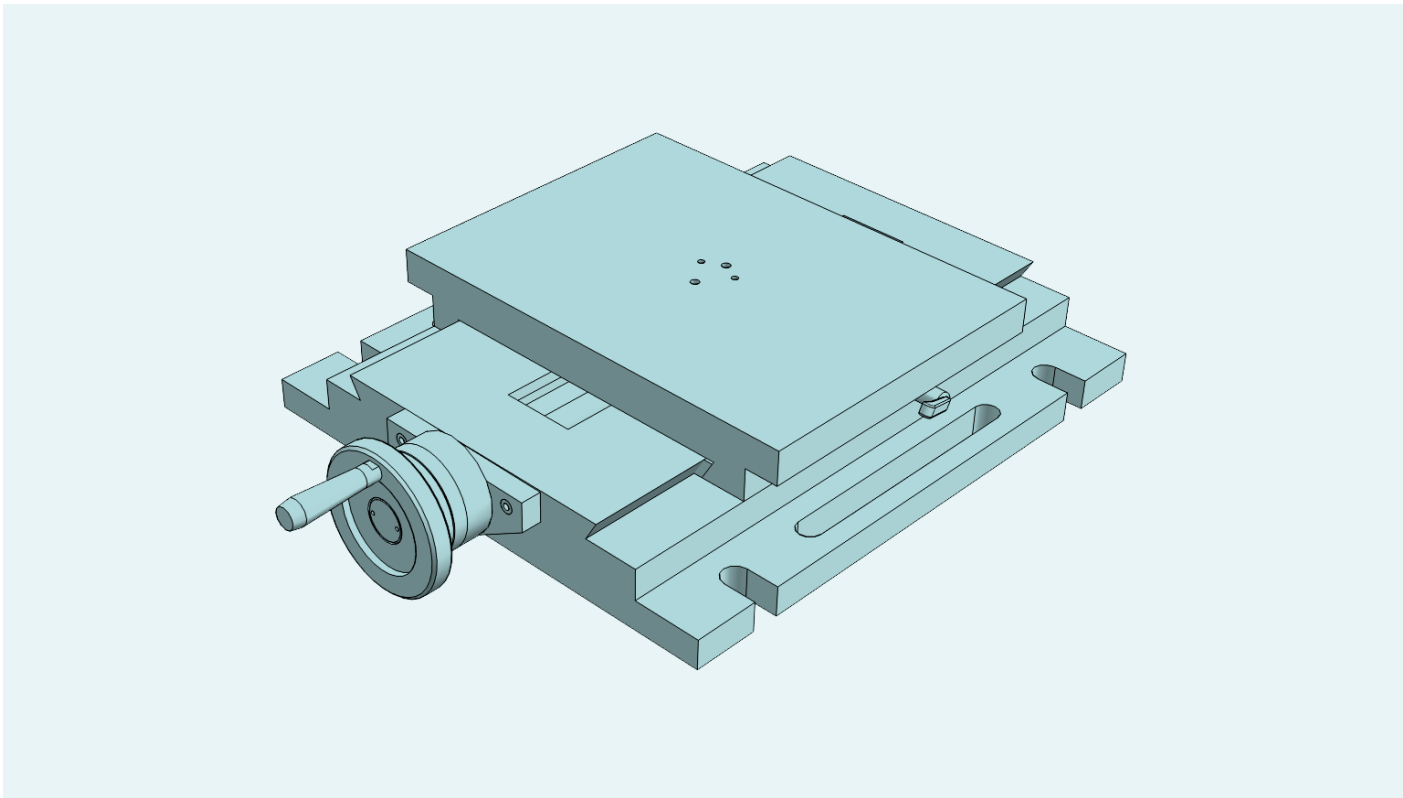


SINGLE axis table for applications with linear units. Can be used in horizontal or vertical position All elements in stabilized cast iron GG25. All surfaces with grinded finishment. Millimetered rules in XY. Vernier/nonuis matt chrome. Dial, with zero setting. Spindle with trapezoidal thread. Adjustable spindle nut. Standard lock in XY (M6 screw to block the dovetailed guides in working position)

**Slide table travelling 160**

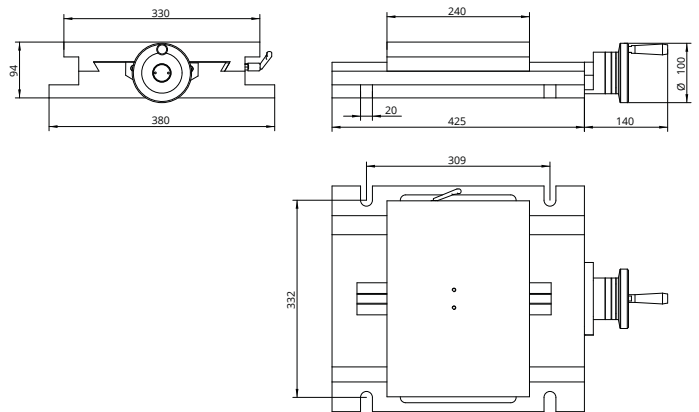


Technical Specifications	
X - Travel [mm]	160
Y - Travel [mm]	-
Resolution [mm]	0,05
Max. weight [kg]	270
Max. work pres. [kg]	1000
Weight [kg]	26

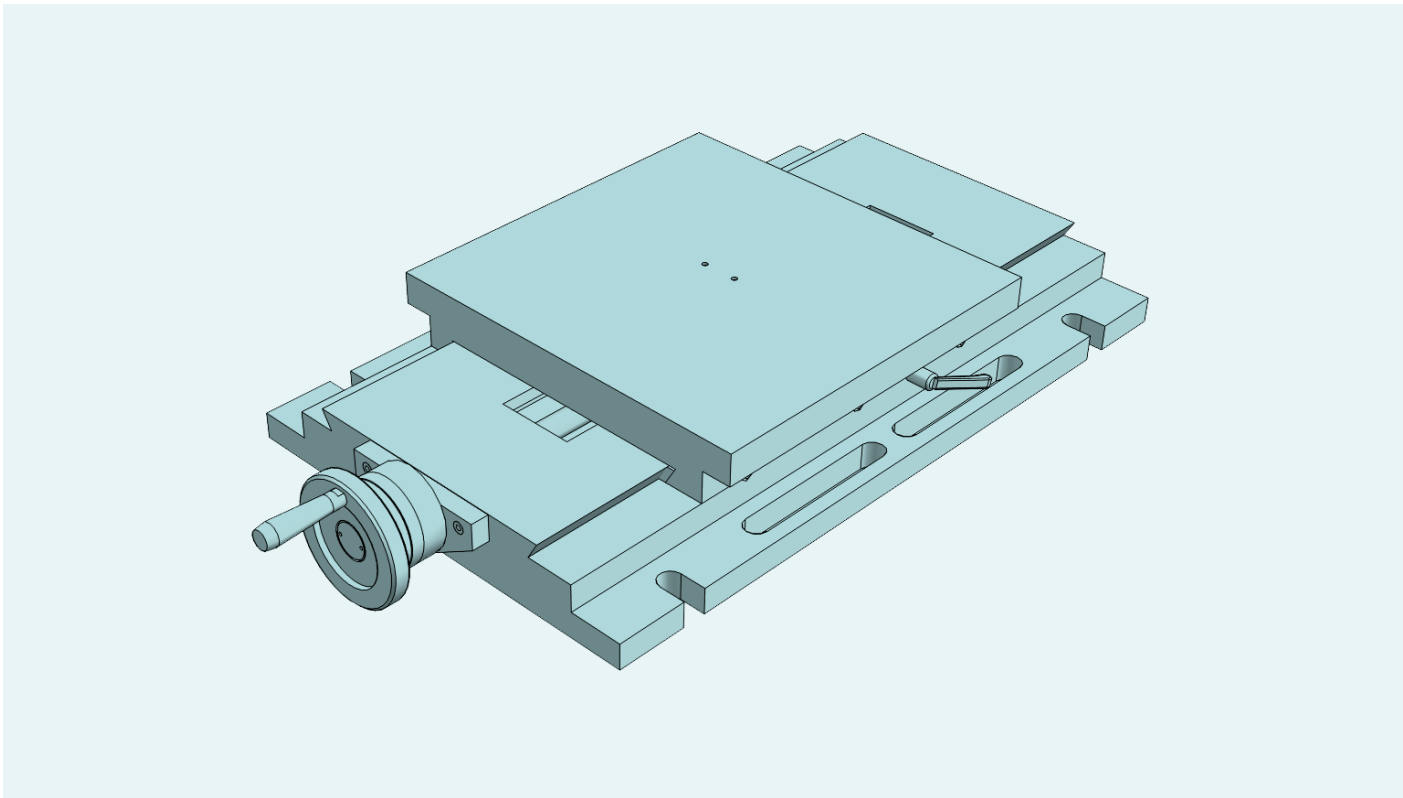


SINGLE axis table for applications with linear units. Can be used in horizontal or vertical position All elements in stabilized cast iron GG25. All surfaces with grinded finishment. Millimetered rules in XY. Vernier/nonuis matt chrome. Dial, with zero setting. Spindle with trapezoidal thread. Adjustable spindle nut. Standard lock in XY (M6 screw to block the dovetailed guides in working position)

**Slide table travelling 240**

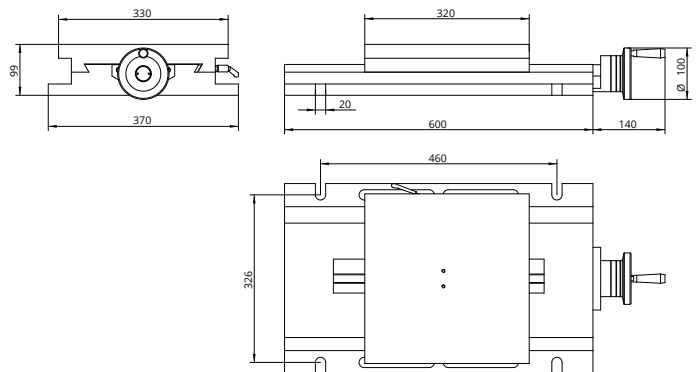


Technical Specifications	
X - Travel [mm]	240
Y - Travel [mm]	-
Resolution [mm]	0,05
Max. weight [kg]	290
Max. work pres. [kg]	1250
Weight [kg]	41

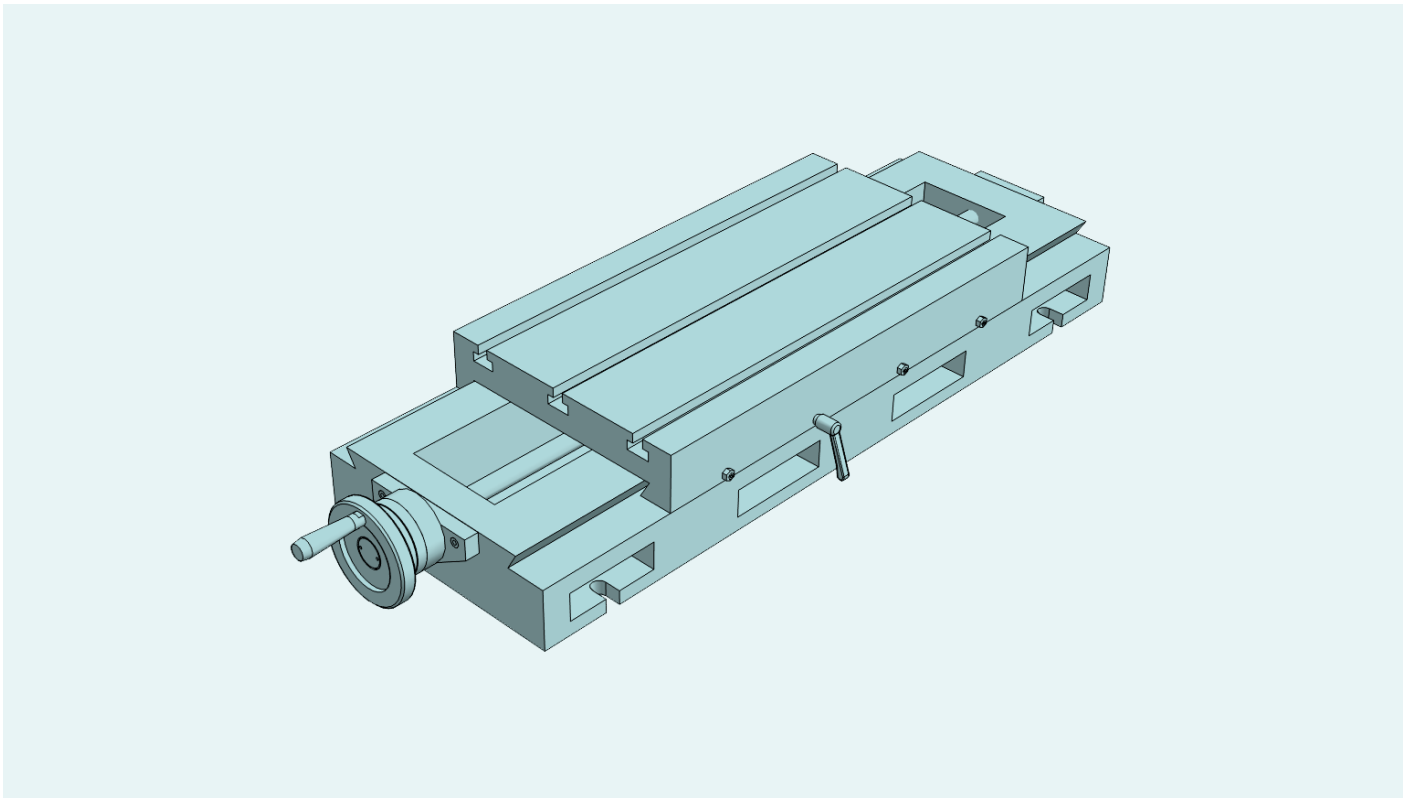


SINGLE axis table for applications with linear units. Can be used in horizontal or vertical position All elements in stabilized cast iron GG25. All surfaces with grinded finishment. Millimetered rules in XY. Vernier/nonuis matt chrome. Dial, with zero setting. Spindle with trapezoidal thread. Adjustable spindle nut. Standard lock in XY (M6 screw to block the dovetailed guides in working position)

**Slide table travelling 300**

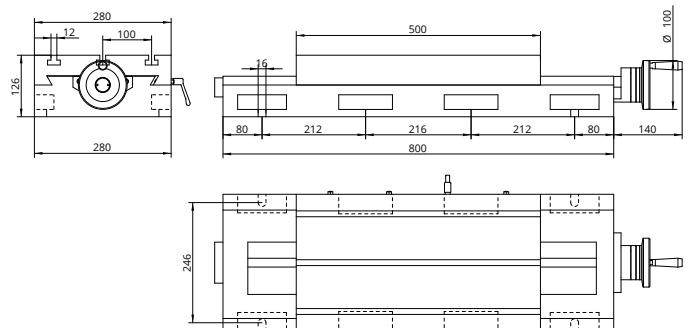


Technical Specifications	
X - Travel [mm]	300
Y - Travel [mm]	-
Resolution [mm]	0,05
Max. weight [kg]	290
Max. work pres. [kg]	1300
Weight [kg]	58

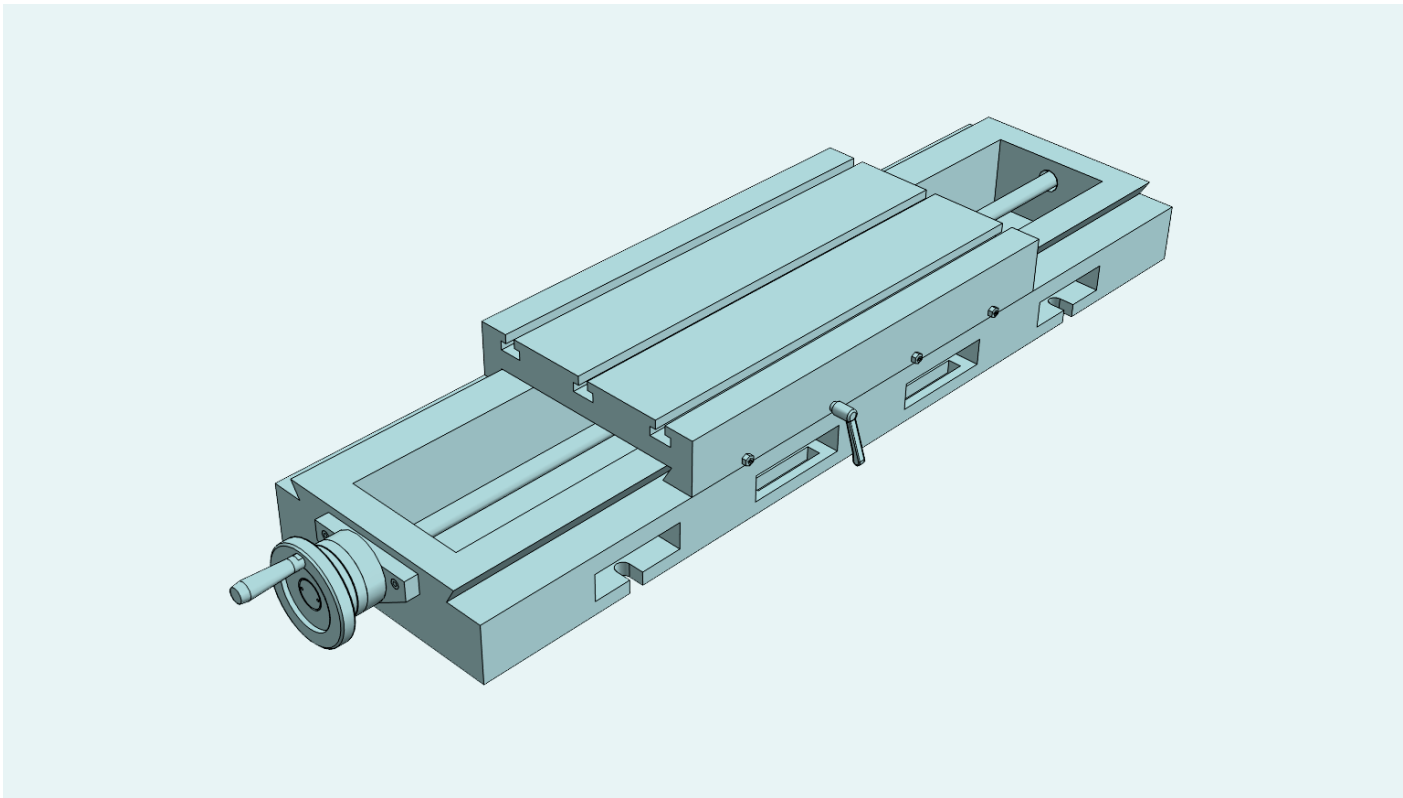


SINGLE axis table for applications with linear units. Can be used in horizontal or vertical position All elements in stabilized cast iron GG25. All surfaces with grinded finishment. Millimetered rules in XY. Vernier/nonuis matt chrome. Dial, with zero setting. Spindle with trapezoidal thread. Adjustable spindle nut. Standard lock in XY (M6 screw to block the dovetailed guides in working position)

**Slide table travelling 300**

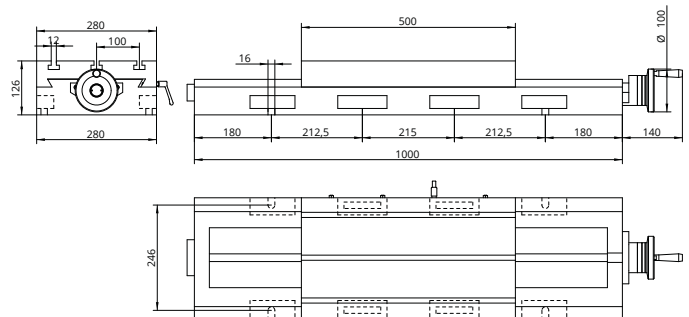


Technical Specifications	
X - Travel [mm]	300
Y - Travel [mm]	-
Resolution [mm]	0,05
Max. weight [kg]	310
Max. work pres. [kg]	1500
Weight [kg]	82

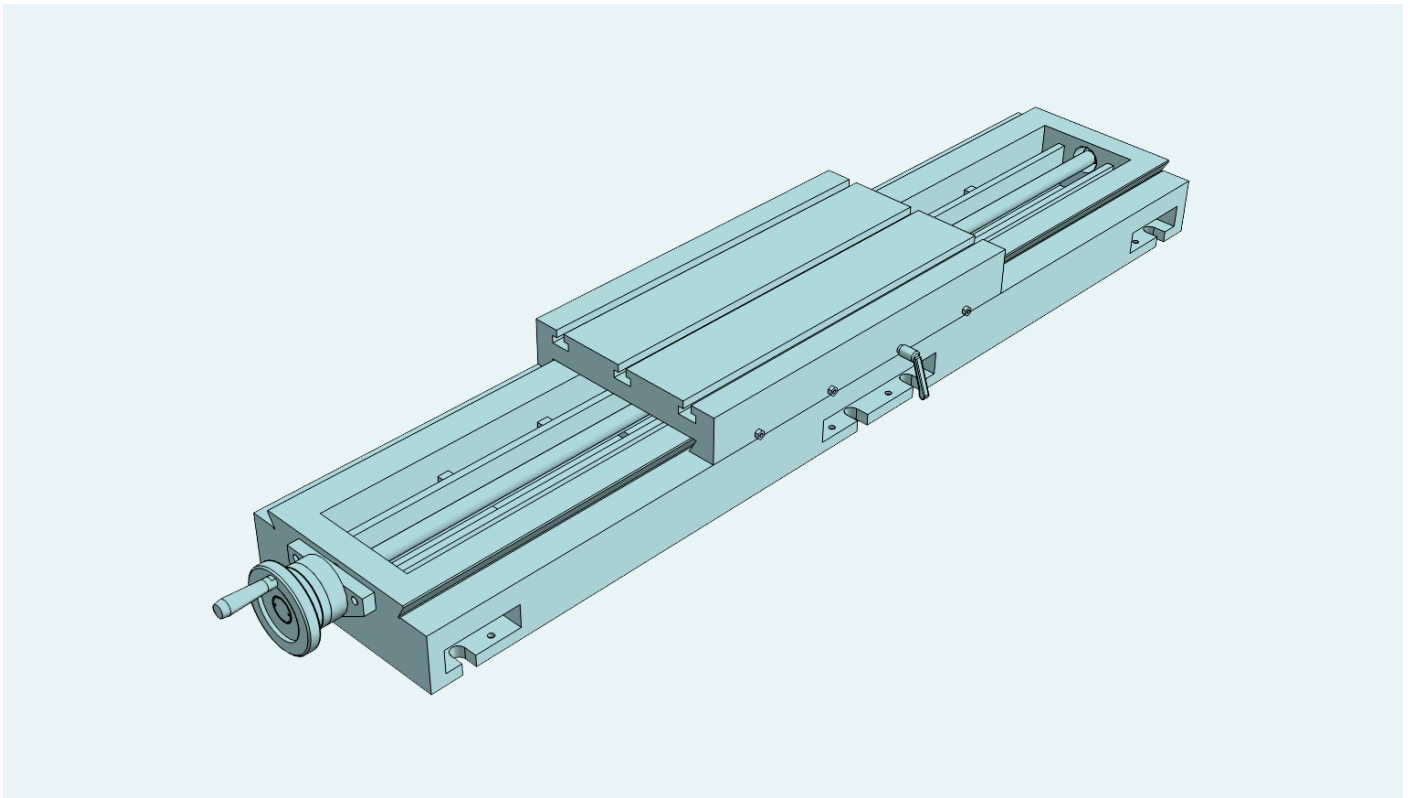


SINGLE axis table for applications with linear units. Can be used in horizontal or vertical position All elements in stabilized cast iron GG25. All surfaces with grinded finishment. Millimetered rules in XY. Vernier/nonuis matt chrome. Dial, with zero setting. Spindle with trapezoidal thread. Adjustable spindle nut. Standard lock in XY (M6 screw to block the dovetailed guides in working position)

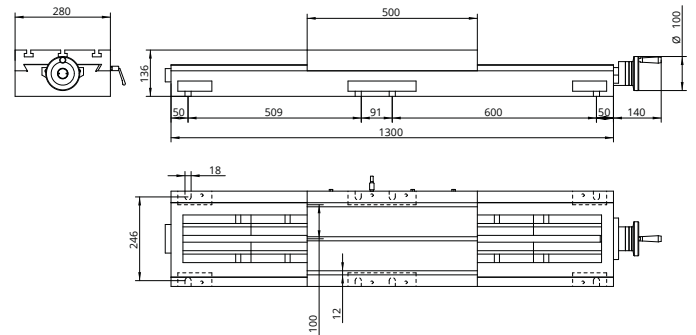
**Slide table travelling 500**



Technical Specifications	
X - Travel [mm]	500
Y - Travel [mm]	-
Resolution [mm]	0,05
Max. weight [kg]	315
Max. work pres. [kg]	1600
Weight [kg]	105



SINGLE axis table for applications with linear units. Can be used in horizontal or vertical position All elements in stabilized cast iron GG25. All surfaces with grinded finishment. Millimetered rules in XY. Vernier/nonuis matt chrome. Dial, with zero setting. Spindle with trapezoidal thread. Adjustable spindle nut. Standard lock in XY (M6 screw to block the dovetailed guides in working position)



**Slide table travelling 800**

**Technical Specifications**

<b>X - Travel [mm]</b>	800
<b>Y - Travel [mm]</b>	-
<b>Resolution [mm]</b>	0,05
<b>Max. weight [kg]</b>	320
<b>Max. work pres. [kg]</b>	1600
<b>Weight [kg]</b>	130