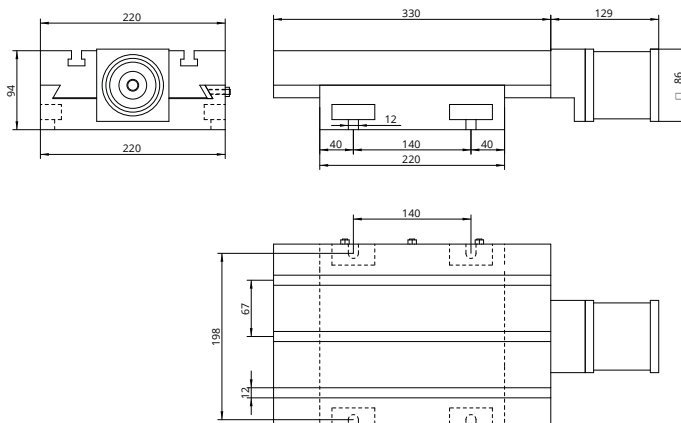
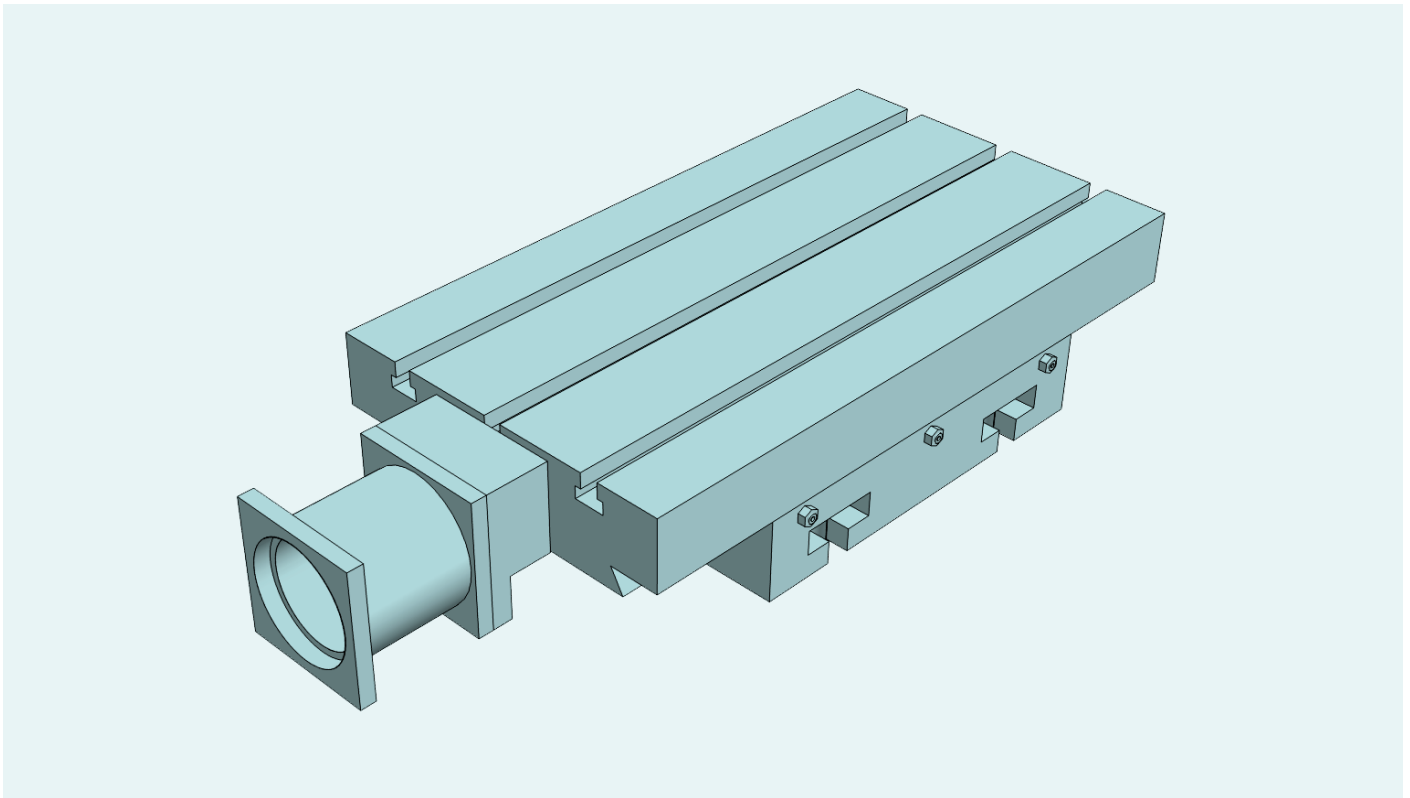


Single automatic X unit. All elements in stabilized cast iron GG25. All surfaces with grinded finishment. Ballbearing spindles with double nut. Dovetailed guides with turcite. Any CNC available under request



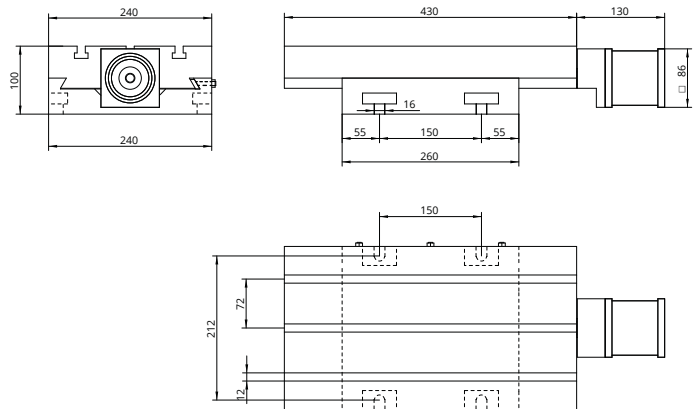
Automatic slide table travelling 110

Technical Specifications	
X - Travel [mm]	110
Y - Travel [mm]	-
Tolerancia CNC [mm]	+/- 0,01
Max. weight [kg]	105
Max. work pres. [kg]	700
Weight [kg]	25

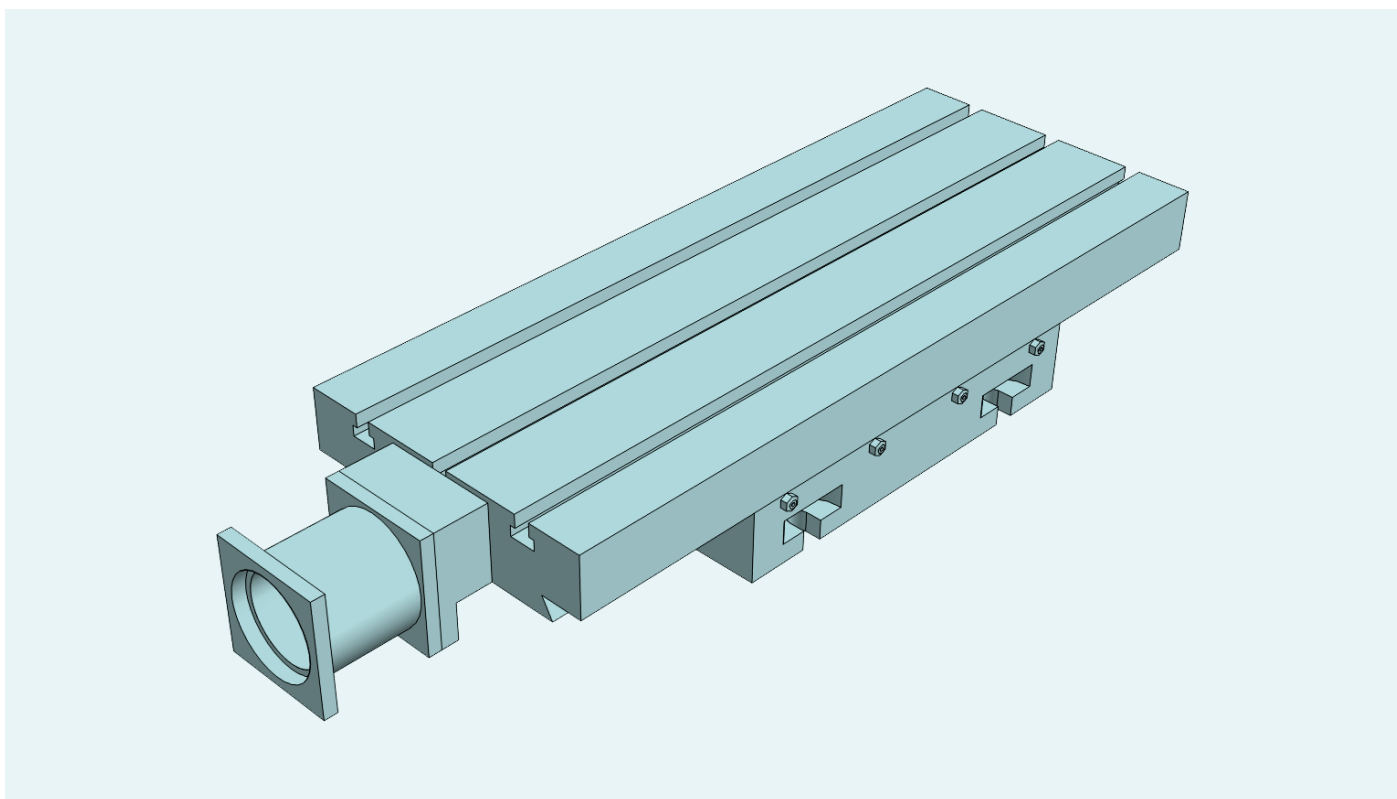


Single automatic X unit. All elements in stabilized cast iron GG25. All surfaces with grinded finishment. Ballbearing spindles with double nut. Dovetailed guides with turcite. Any CNC available under request

Automatic slide table travelling 170

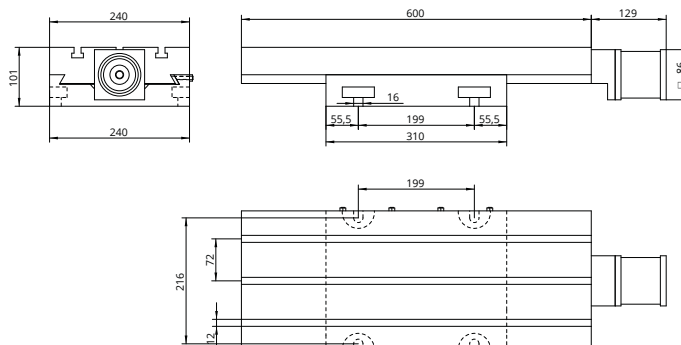


Technical Specifications	
X - Travel [mm]	170
Y - Travel [mm]	-
Tolerancia CNC [mm]	+/- 0,01
Max. weight [kg]	270
Max. work pres. [kg]	900
Weight [kg]	35

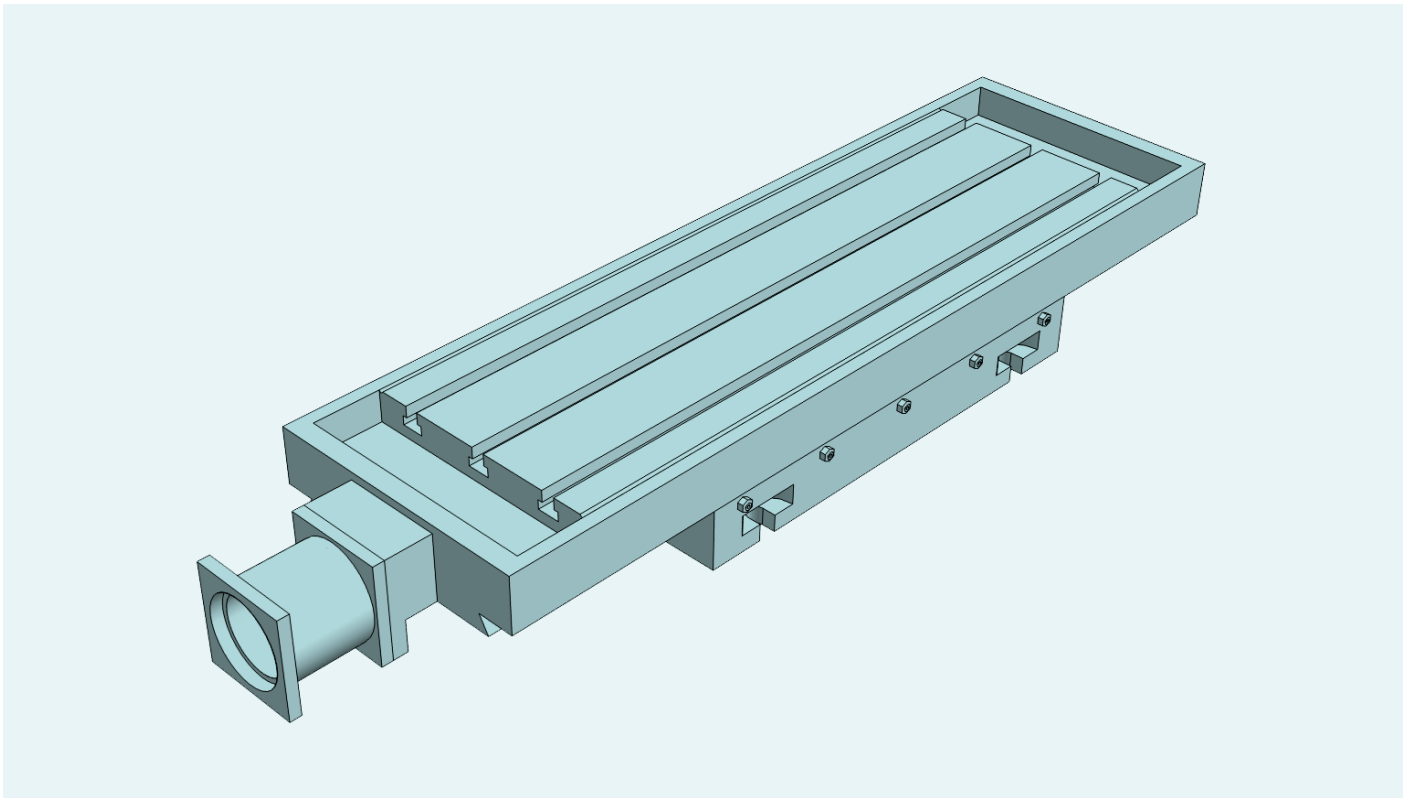


Single automatic X unit. All elements in stabilized cast iron GG25. All surfaces with grinded finishment. Ballbearing spindles with double nut. Dovetailed guides with turcite. Any CNC available under request

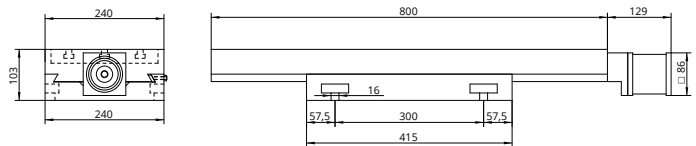
Automatic slide table travelling 290



Technical Specifications	
X - Travel [mm]	290
Y - Travel [mm]	-
Tolerancia CNC [mm]	+/- 0,01
Max. weight [kg]	270
Max. work pres. [kg]	980
Weight [kg]	45



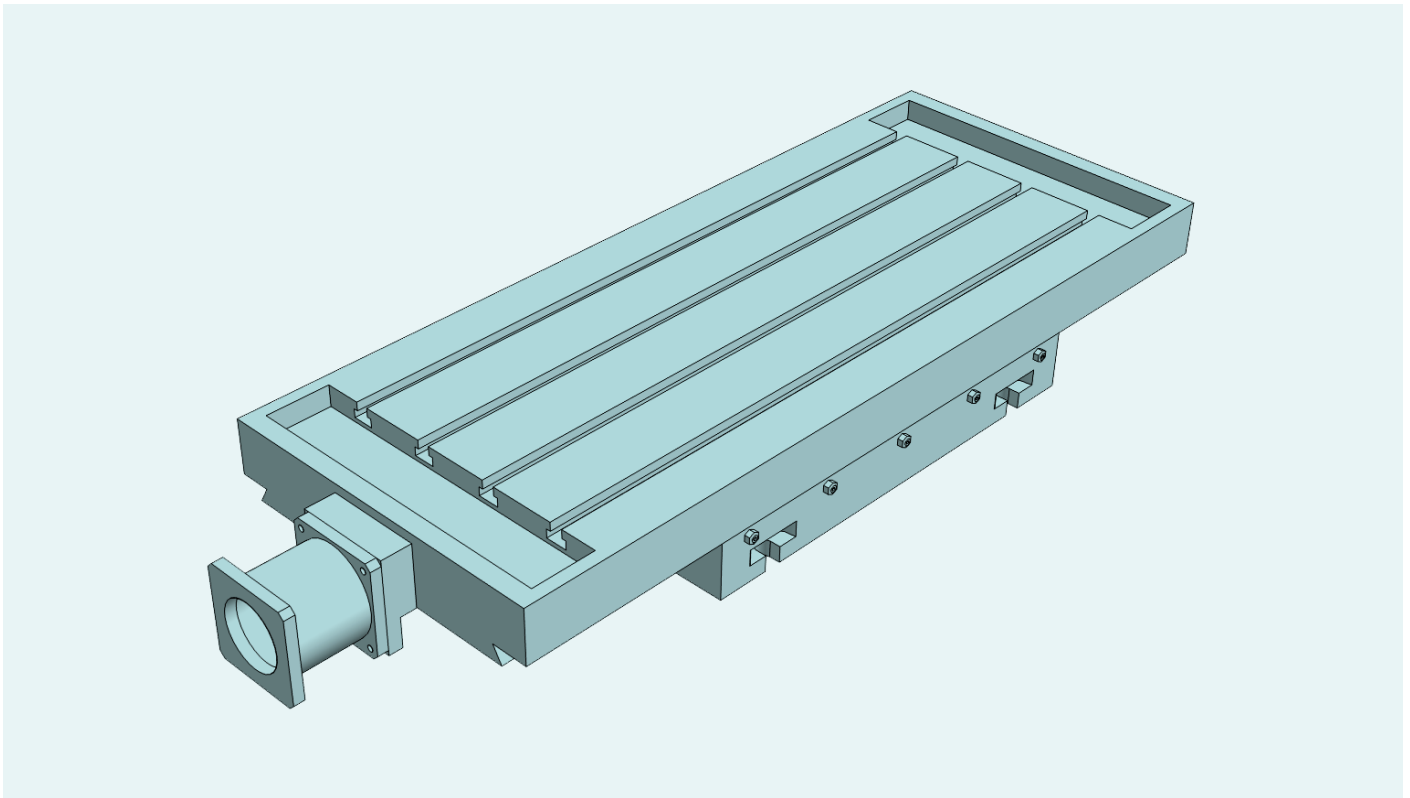
Single automatic X unit. All elements in stabilized cast iron GG25. All surfaces with grinded finishment. Ballbearing spindles with double nut. Dovetailed guides with turcite. Any CNC available under request



Automatic slide table travelling 385

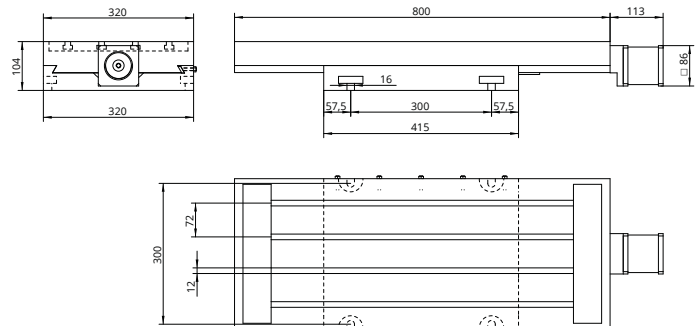


Technical Specifications	
X - Travel [mm]	385
Y - Travel [mm]	-
Tolerancia CNC [mm]	+/- 0,01
Max. weight [kg]	290
Max. work pres. [kg]	1200
Weight [kg]	62



Single automatic X unit. All elements in stabilized cast iron GG25. All surfaces with grinded finishment. Ballbearing spindles with double nut. Dovetailed guides with turcite. Any CNC available under request

Automatic slide table travelling 385



Technical Specifications	
X - Travel [mm]	385
Y - Travel [mm]	-
Tolerancia CNC [mm]	+/- 0,01
Max. weight [kg]	290
Max. work pres. [kg]	1200
Weight [kg]	85